

Role of early health technology assessment (HTA) in determining value-for-money of COVID-19 Vaccine

Nantasit Luangasanatip, PhD

Mahidol-Oxford Tropical Medicine Research Unit, (MORU)

Health Technology Assessment (HTA)

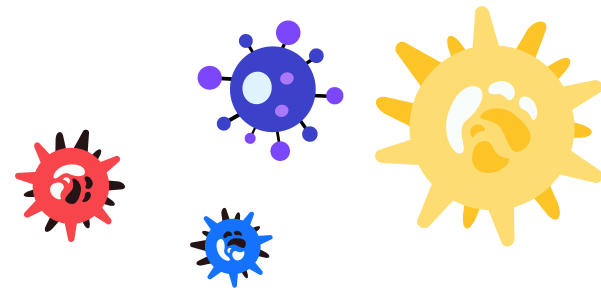


Early HTA is used for **the new health product development to inform R&D process** to mitigate the risks related to the use and coverage of products under competing and uncertain conditions.

“HTA is the **systematic evaluation** of properties, effects and/or impacts of health technologies and interventions. It covers both the **direct, intended consequences** of technologies and interventions and their **indirect, unintended consequences.**” (WHO, EB134/30)

Aimed at **informing decision making** regarding health technologies

Early HTA of COVID-19 Vaccines



Clinical information

- Patients Demographic
- Severity (Infectiousness) and Hospitalization rate
- Case fatality
- Natural immunity

Vaccine Characteristics

- Efficacy;
 - Reduce susceptibility
 - Block transmission
 - Reduce severity
- Vaccine duration
- Adverse events
- Logistics condition



Vaccination Strategies

- Vaccine Coverage
- Target population
 - Risk group: HCPS, high incidence/mortality
 - Age group: elderly, adults

Baseline Situation

- Background NPIs
 - Hand hygiene & Masking
 - Social distancing
 - Travel restriction
 - Test, Trace & Isolate (TTI)
- Level of pre-immunity

