

Social Determinants Health and the PANDEMIC

Michael Marmot

@MichaelMarmot

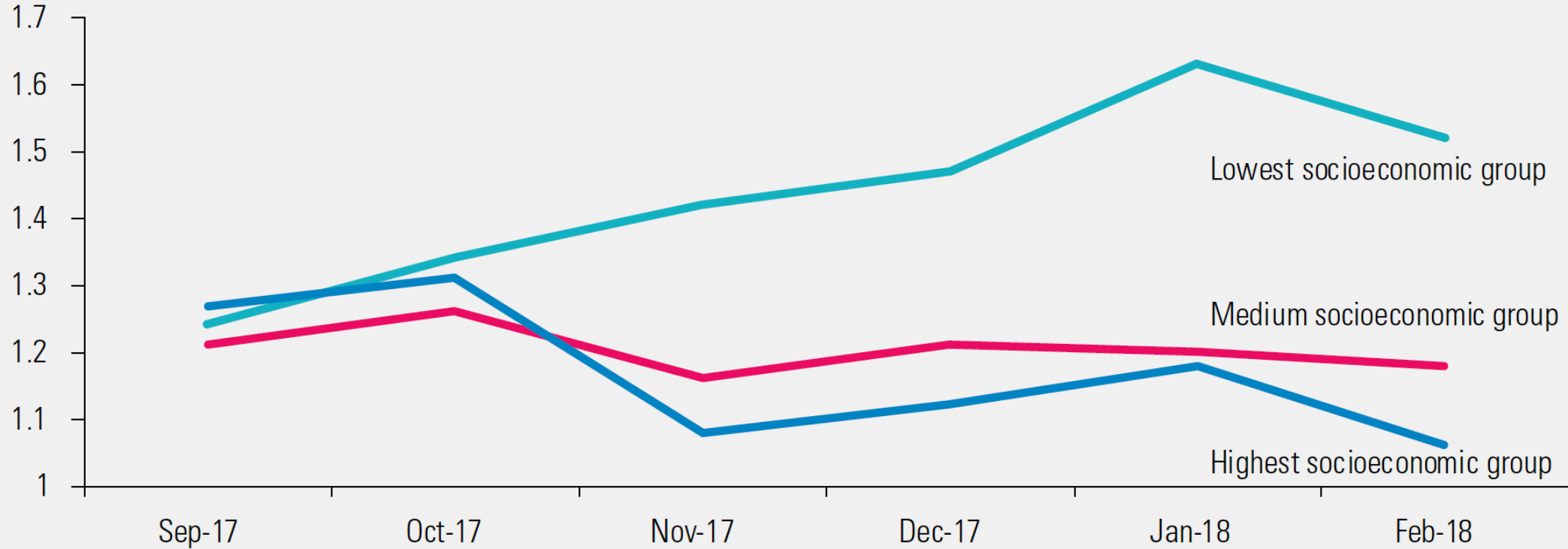
<http://www.instituteoftheequity.org/the-marmot-review-10-years-on>

PMAC

November 2020

Figure 9. The lowest socioeconomic group in Puerto Rico saw estimated excess deaths related to Hurricane Maria peak two months later than the medium and highest socioeconomic groups did

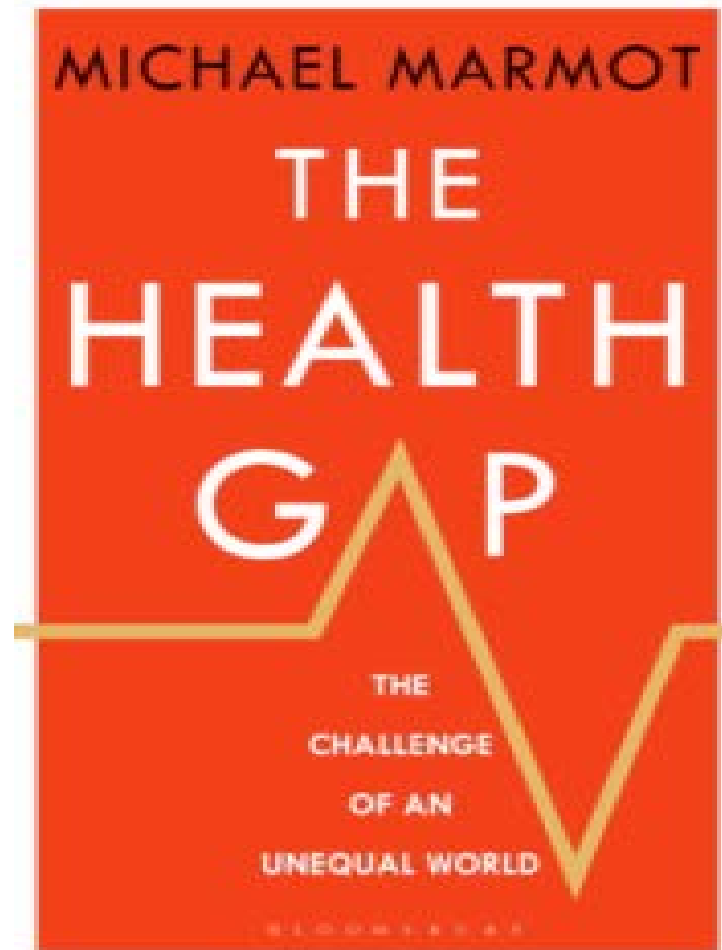
Relative excess ratio, by socioeconomic group



Note: Socioeconomic groups are based on the Municipal Socioeconomic Development Index developed by the Puerto Rico Planning Board.

Source: GWU 2018.

Why treat people and send them back to the conditions that made them sick?



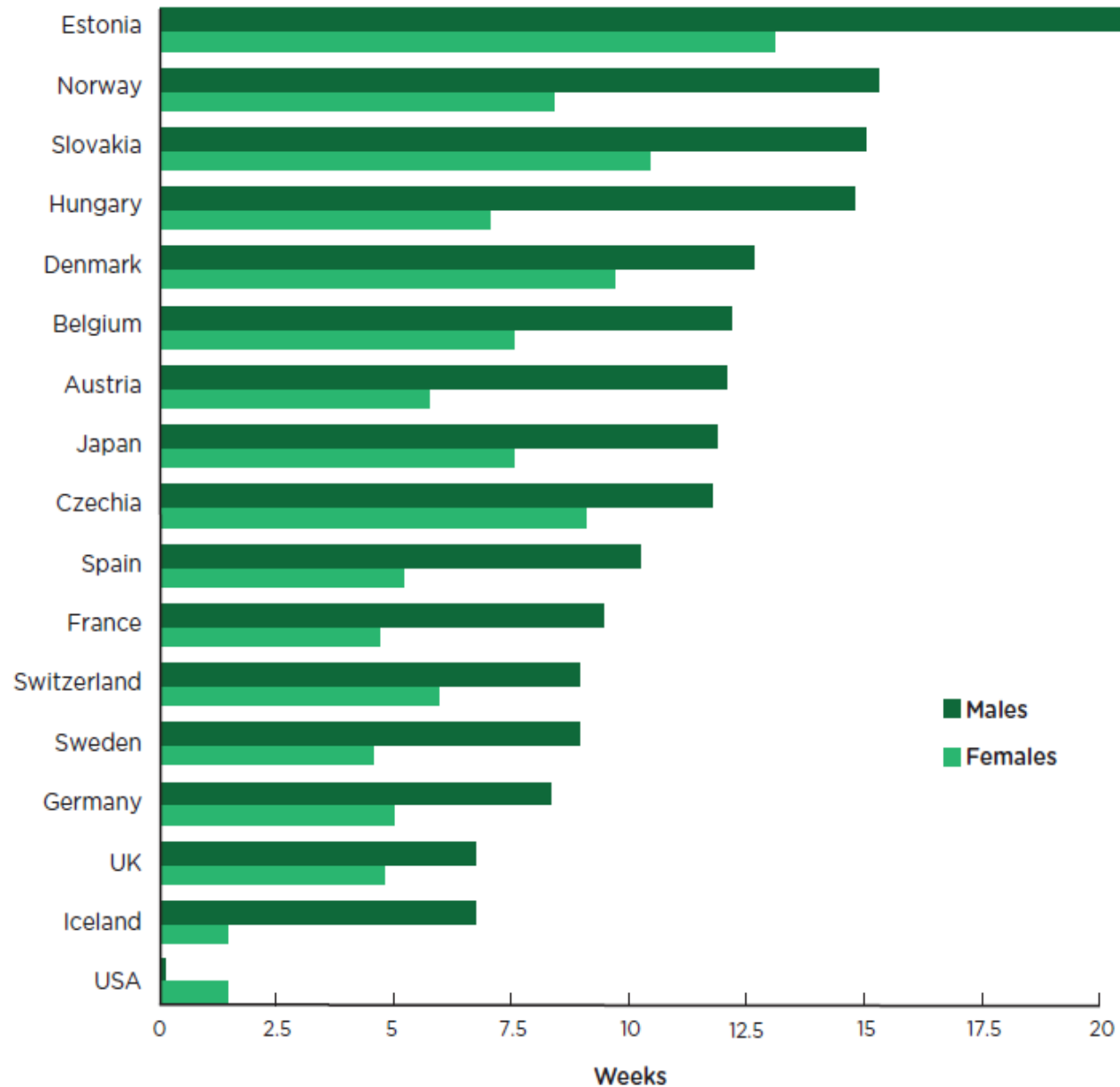


HEALTH EQUITY IN ENGLAND:
THE MARMOT REVIEW 10 YEARS ON

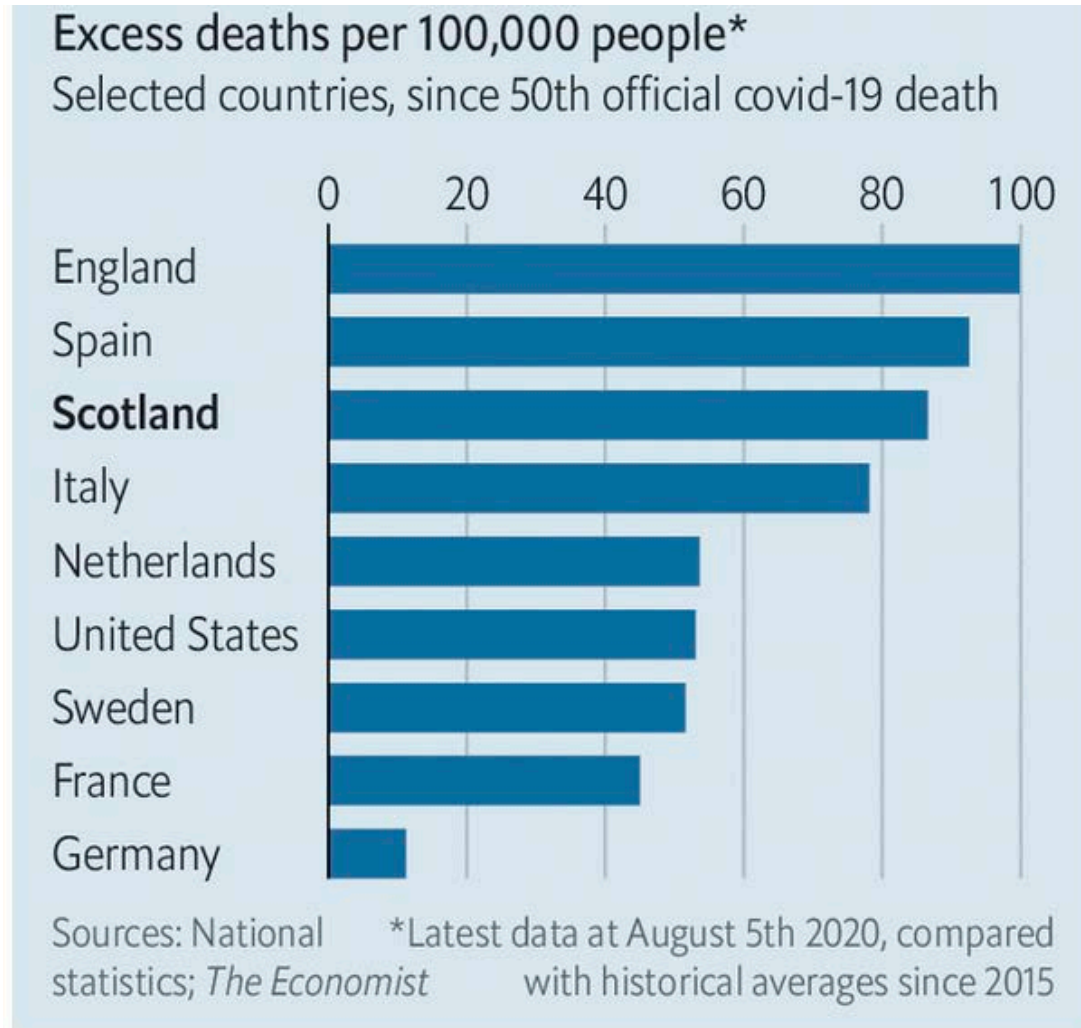
HEALTH EQUITY IN ENGLAND: THE MARMOT REVIEW 10 YEARS ON

“We have lost a decade. And it shows.”

Annual life expectancy improvement in weeks, 2011 to 2017



Excess deaths in time of Covid-19

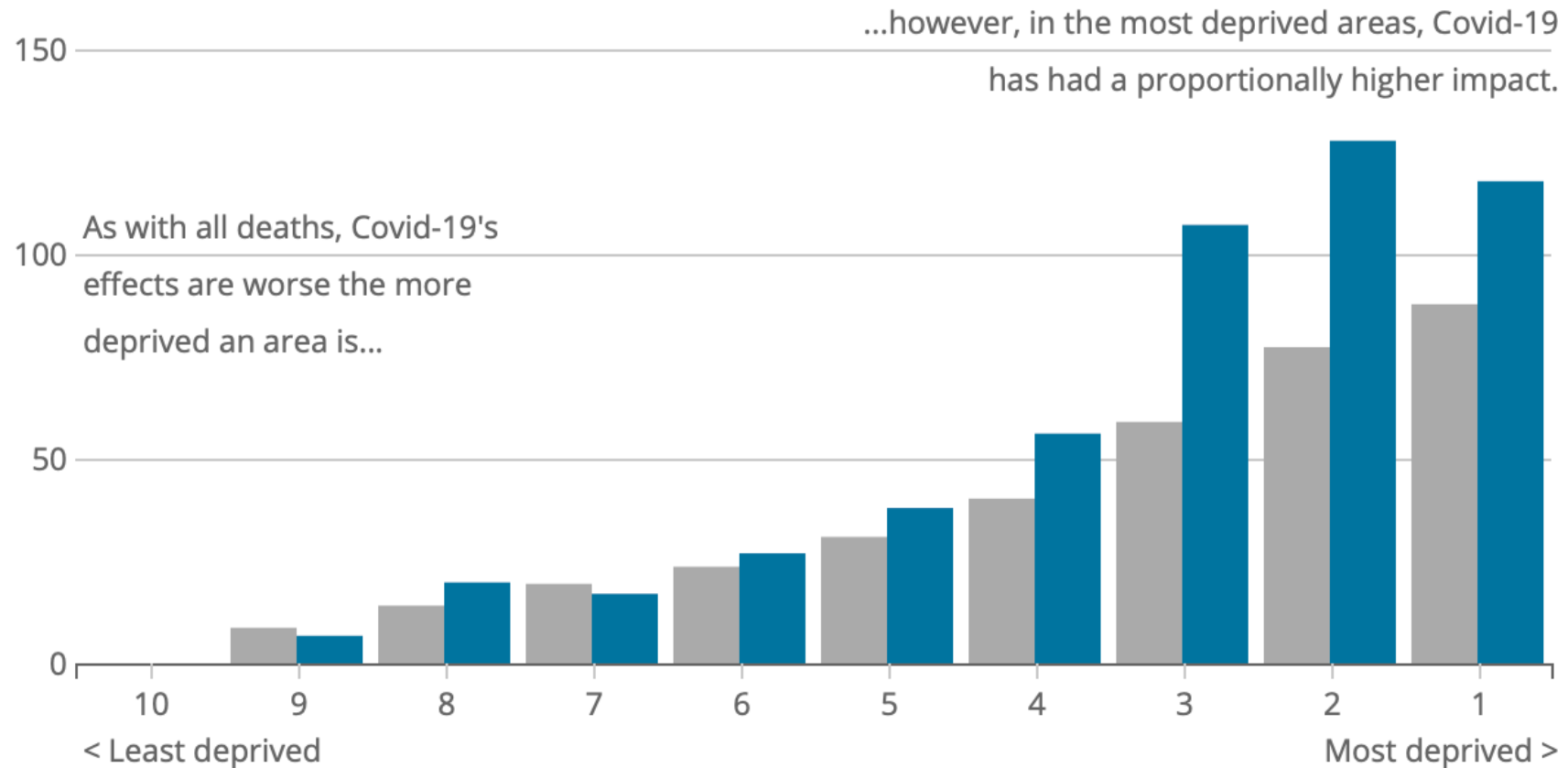


The Economist

Mortality ASMR England 1 March to 17 April 2020

All deaths
 Covid-19 deaths

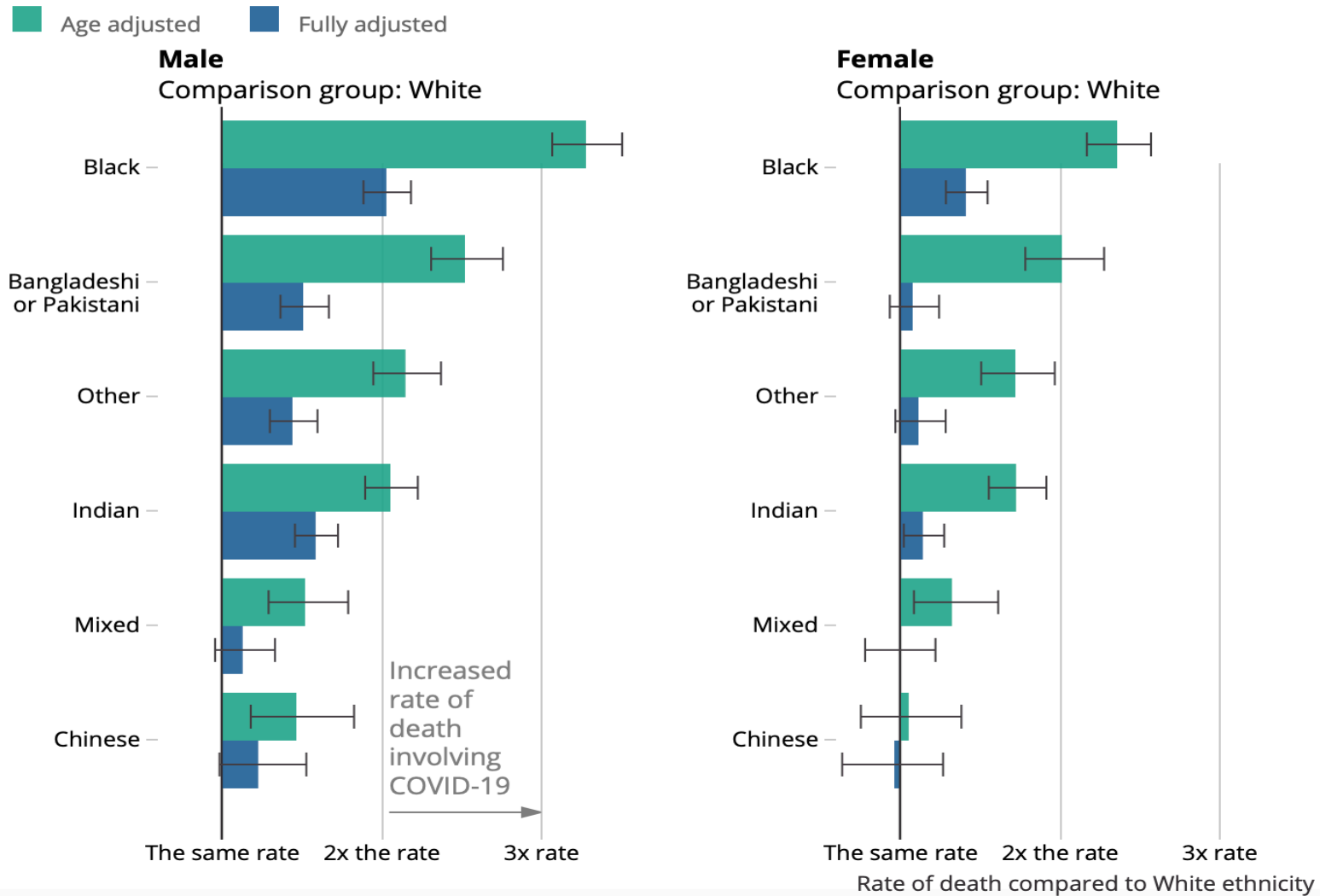
Death rate as a % difference from the least deprived decile



Source: Office for National Statistics – Deaths involving COVID-19

Covid-19, ethnicity and deprivation

Rate of COVID-19 death by ethnic group and sex relative to the White population, England and Wales, 2 March to 15 May 2020

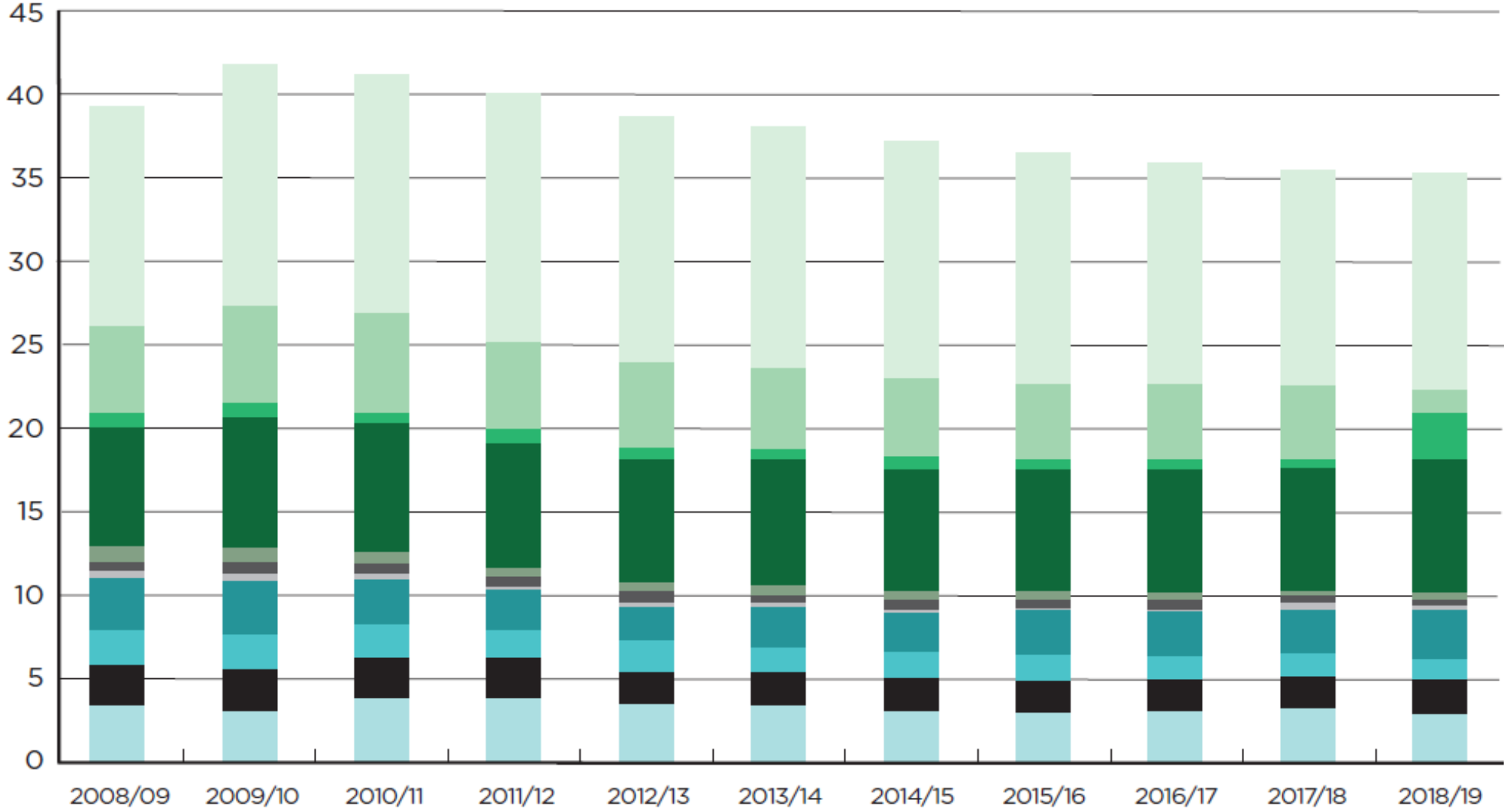


Fair Society, Healthy Lives:
6 Policy Objectives

- A. Give every child the best start in life**
- B. Enable all children, young people and adults to maximise their capabilities and have control over their lives**
- C. Create fair employment and good work for all**
- D. Ensure healthy standard of living for all**
- E. Create and develop healthy and sustainable places and communities**
- F. Strengthen the role and impact of ill health prevention**

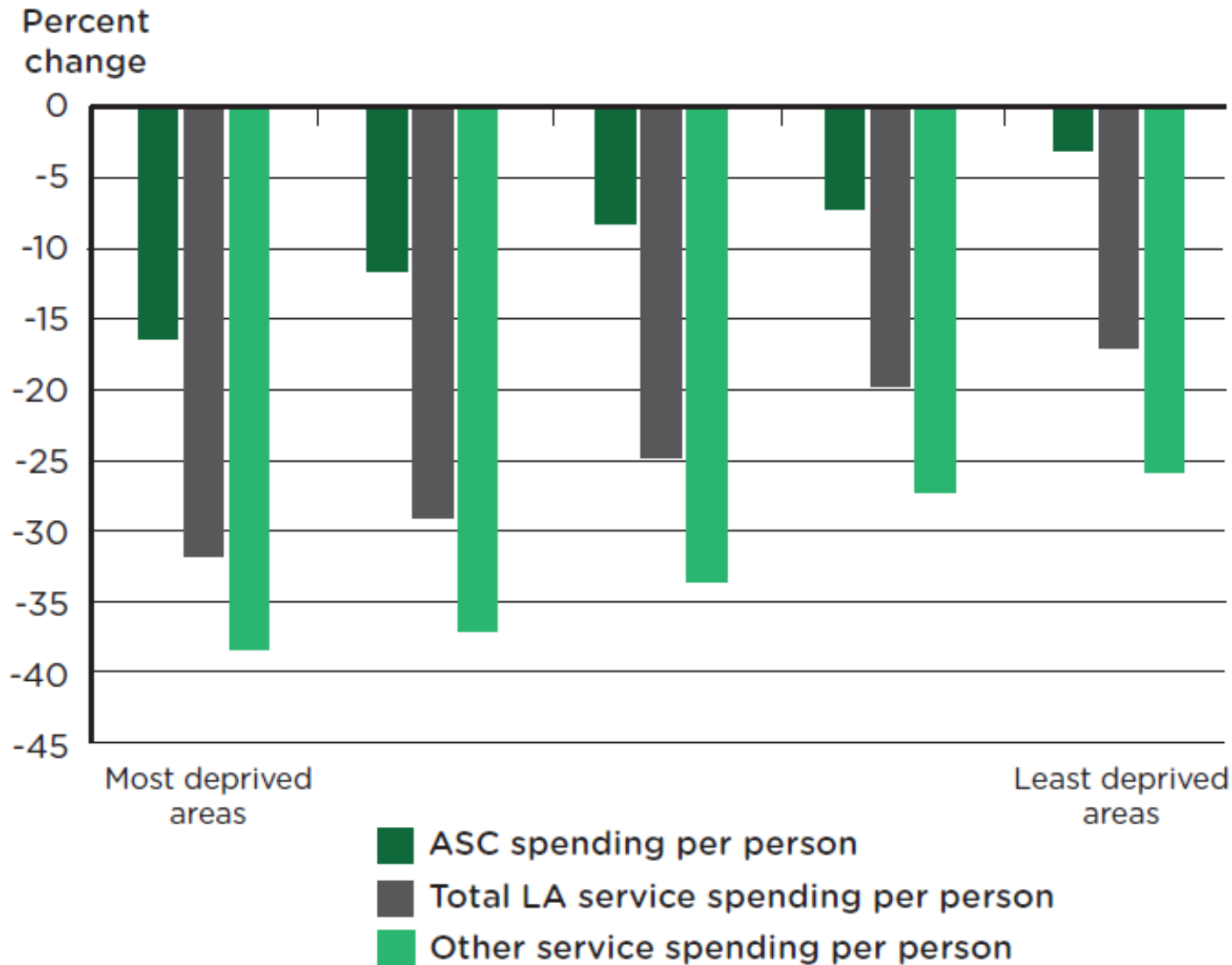


Public sector expenditure (% of GDP) declined in the UK



**Expenditure
by service**

Council spending per person decreased the most in more deprived areas

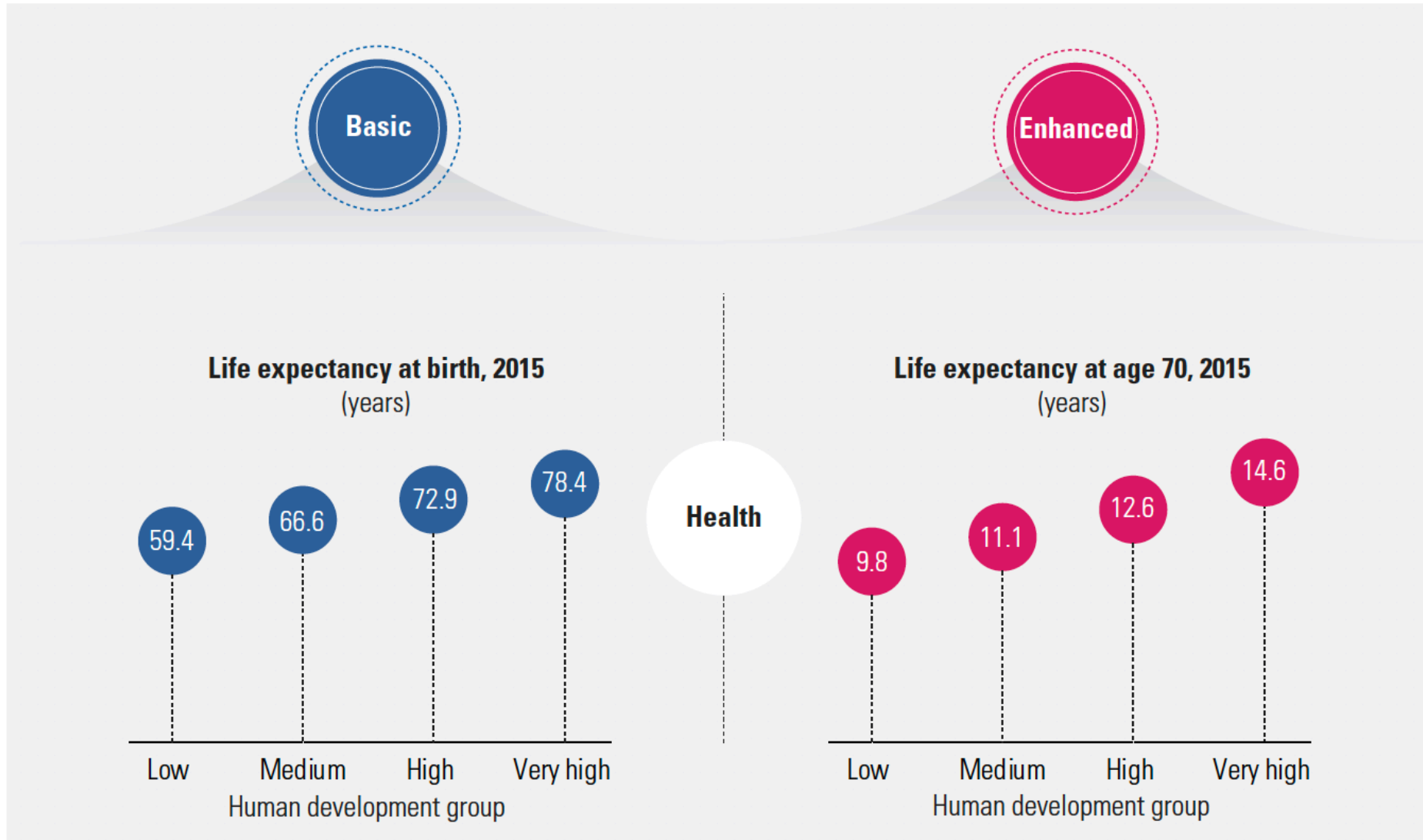


Human Development Report 2019



Beyond income, beyond averages, beyond today:
Inequalities in human development in the 21st century

Across countries the world remains deeply unequal in both basic and enhanced capabilities

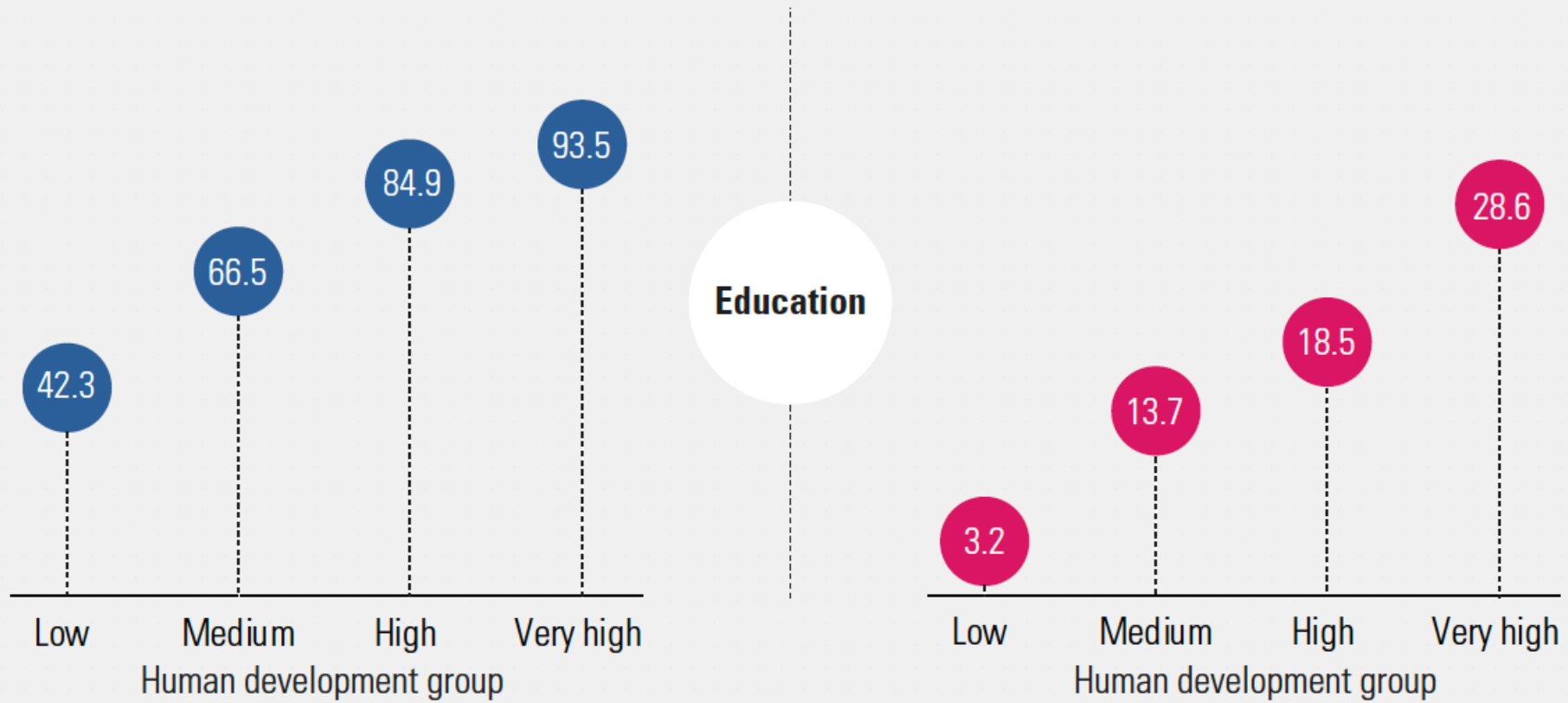


Basic Capabilities

Enhanced Capabilities

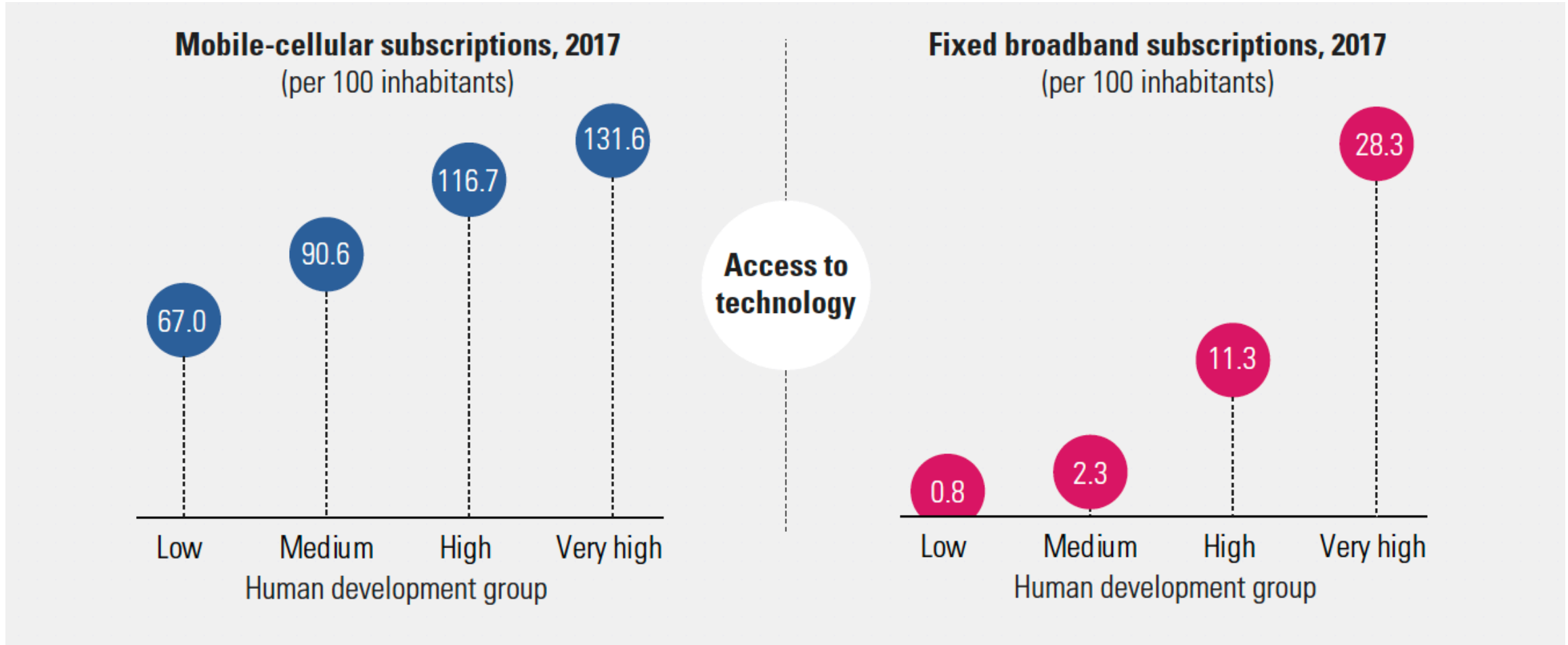
Population with a primary education, 2017
(percent)

Population with a tertiary education, 2017
(percent)

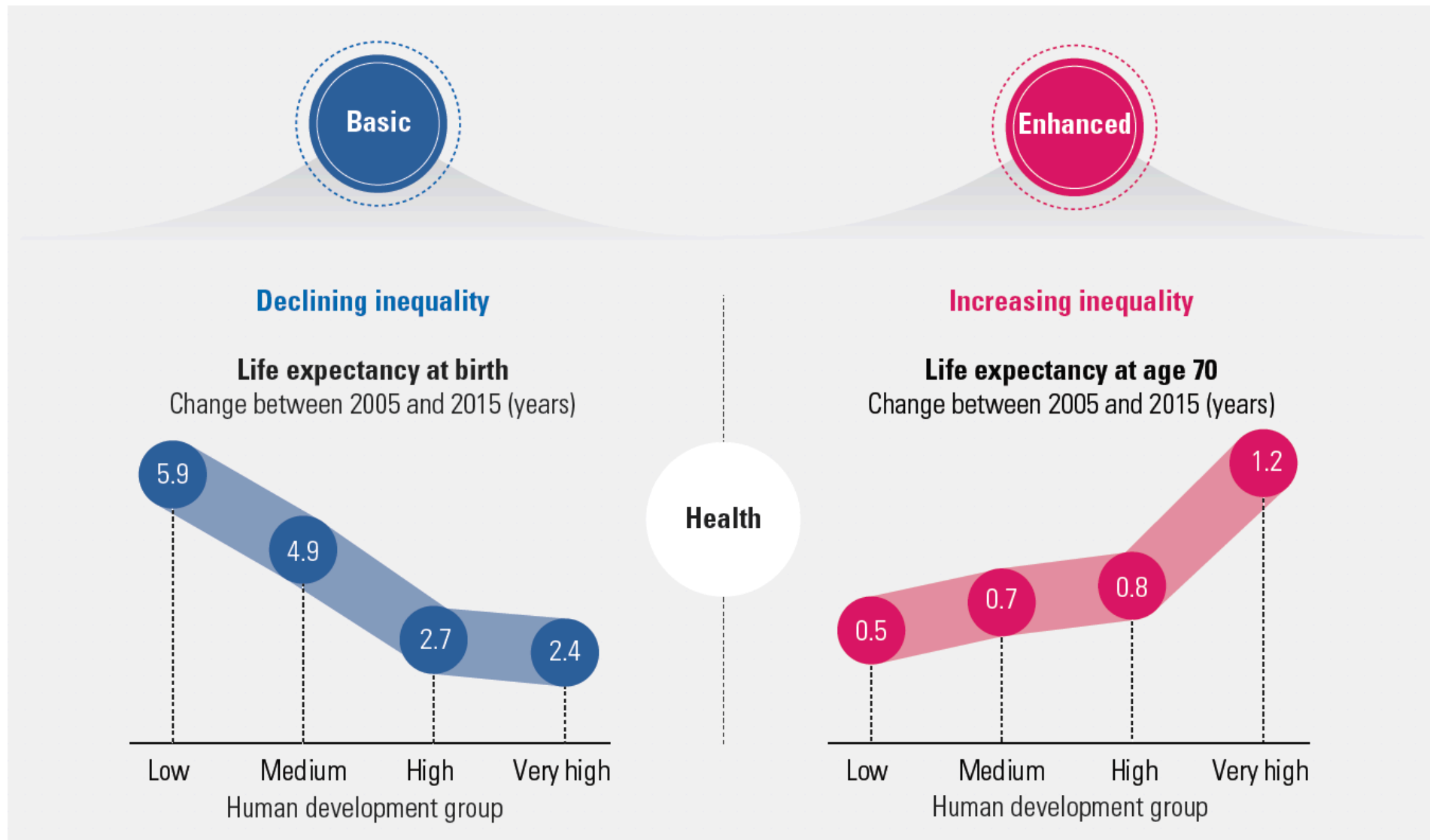


Basic Capabilities

Enhanced Capabilities



Slow convergence in basic capabilities, rapid divergence in enhanced ones

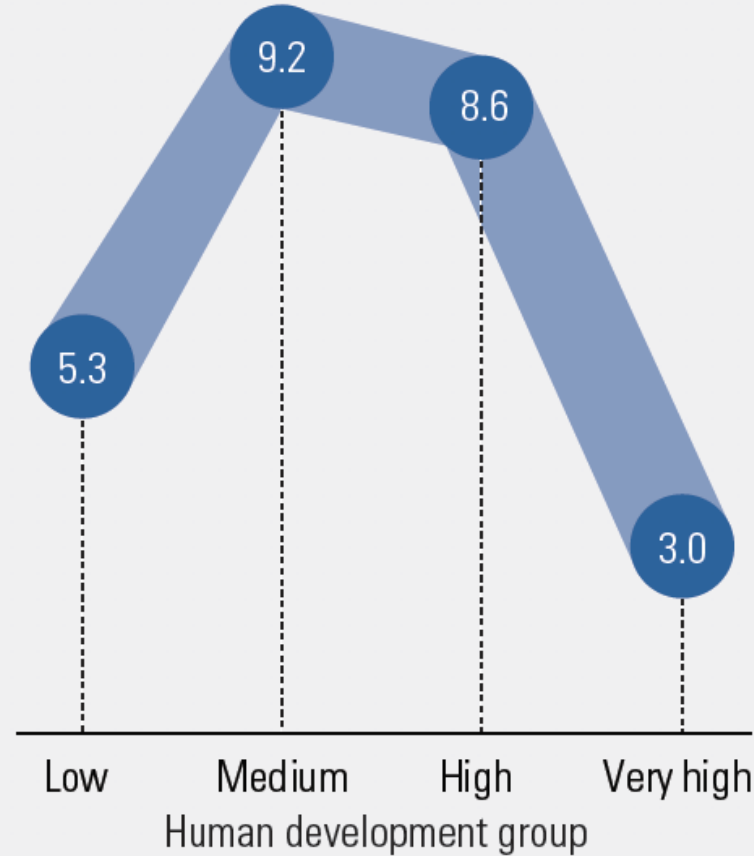


Basic Capabilities

Enhanced Capabilities

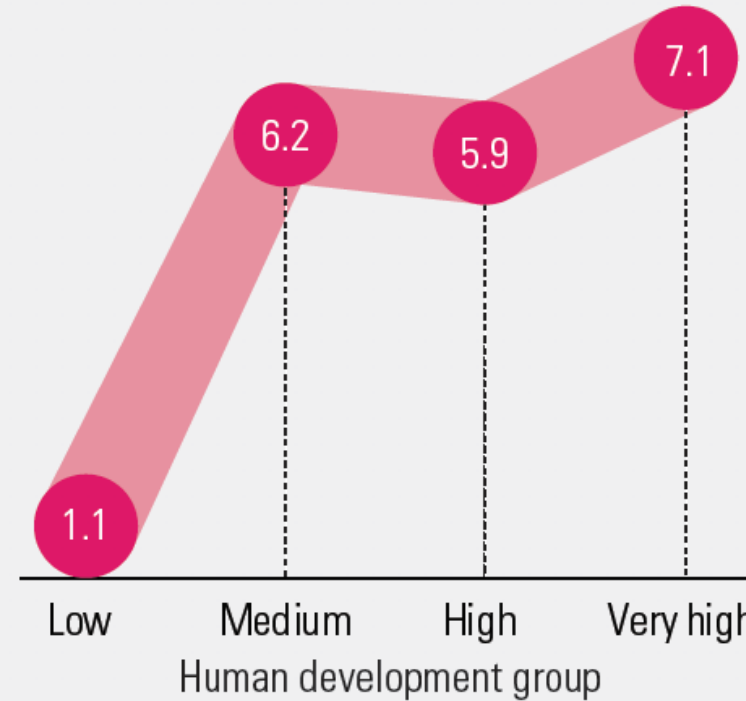
Share of the population with a primary education

Change between 2007 and 2017 (percentage points)



Share of the population with a tertiary education

Change between 2007 and 2017 (percentage points)



Education

Covid-19 the great leveller? eg USA

From March to September:

- America's 643 billionaires increased wealth by 29%
 - \$845 billion
- Hourly wages of bottom 82% of the workforce declined by
 - 4.4%

- “a wellbeing approach can be described as enabling people to have the capabilities they need to live lives of purpose, balance, and meaning for them.”

Amartya Sen?

No



TE TAI ŌHANGA
THE TREASURY